



environmental affairs

Department:
Environmental Affairs
REPUBLIC OF SOUTH AFRICA



EXTENSION OF A STRATEGIC ENVIRONMENTAL ASSESSMENT TO FACILITATE THE EFFICIENT AND EFFECTIVE IMPLEMENTATION OF WIND AND SOLAR PHOTOVOLTAIC ENERGY DEVELOPMENT IN SOUTH AFRICA

Environmental Considerations

25 July 2017

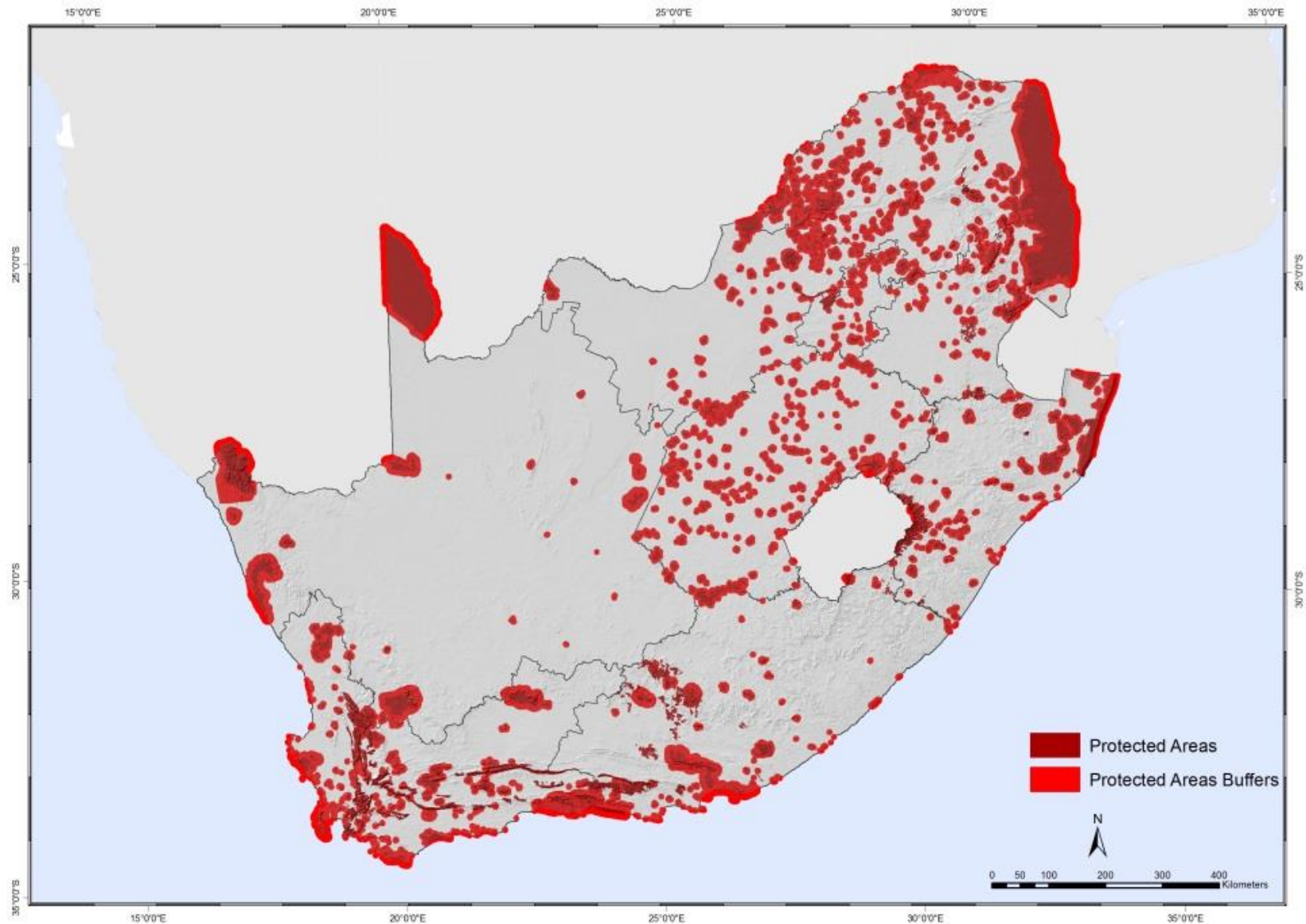
Presented by: Kedibone Lamula (SANBI)
Email: K.Lamula@sanbi.org.za

Protected Areas – Wind and Solar

Features	Source	Attributes	Mapping Sensitivity	Sensitivity (Wind)	Mapping Sensitivity	Sensitivity (Solar)
Protected Areas	South African Protected Areas Database (SAPAD) - Q1, 2017 , South African National Parks (SANParks) and Provincial	Marine Protected Areas	Very high sensitivity	feature	Very high sensitivity	feature
		National Parks	Very high sensitivity	feature	Very high sensitivity	feature
		Nature Reserves	Very high sensitivity	feature	Very high sensitivity	feature
		World Heritage Sites (Core)	Very high sensitivity	feature	Very high sensitivity	feature
		Mountain Catchment Areas (natural)	Very high sensitivity	feature	Very high sensitivity	feature
		Protected Environments (natural)	Very high sensitivity	feature	Very high sensitivity	feature
		Forest Nature Reserve	Very high sensitivity	feature	Very high sensitivity	feature
		Forest Wilderness Area	Very high sensitivity	feature	Very high sensitivity	feature
		Special Nature Reserve	Very high sensitivity	feature	Very high sensitivity	feature
Protected Areas Buffers	SAPAD - Q1, 2017 and South African Conservation Areas Database (SACAD) - Q1,2017	10 KM buffer around National Parks	High sensitivity	feature	High sensitivity	feature
		5KM buffer around Nature Reserves	High sensitivity	feature	High sensitivity	feature
		Buffer around World Heritage Sites	High sensitivity	feature	High sensitivity	feature

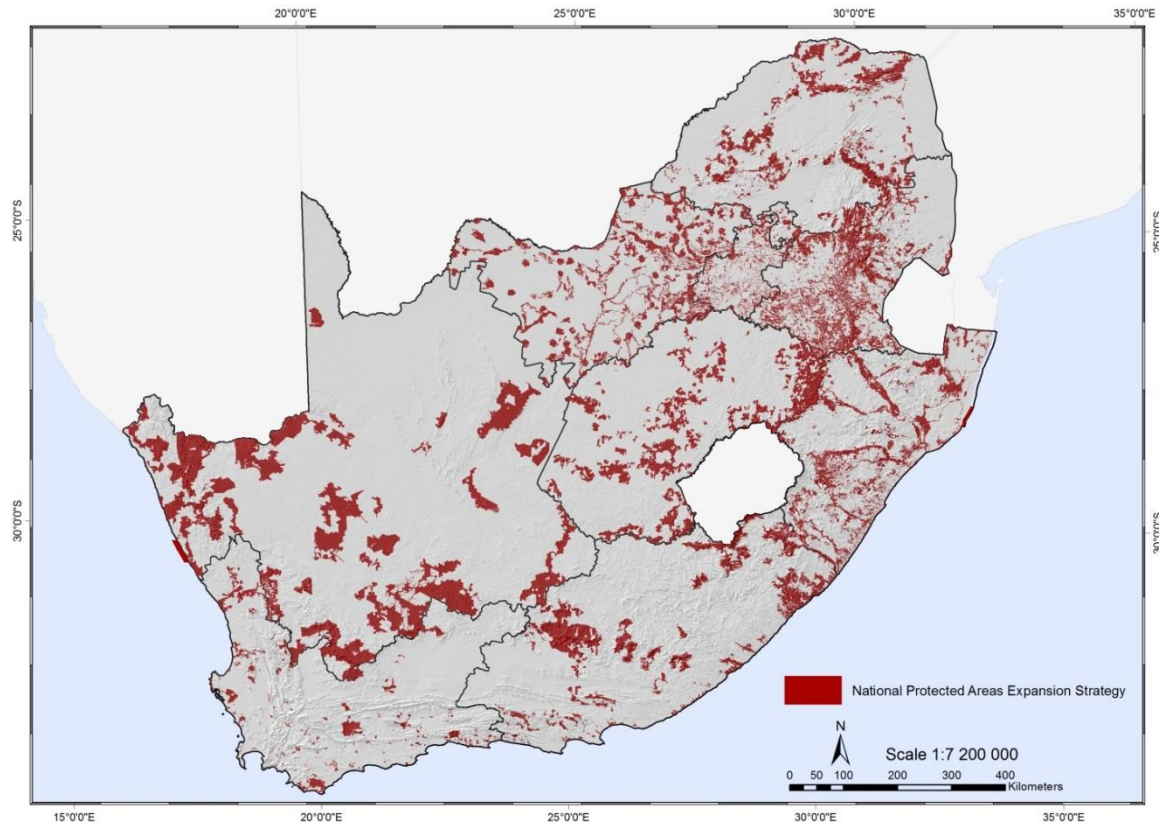


Protected Areas – Wind and Solar



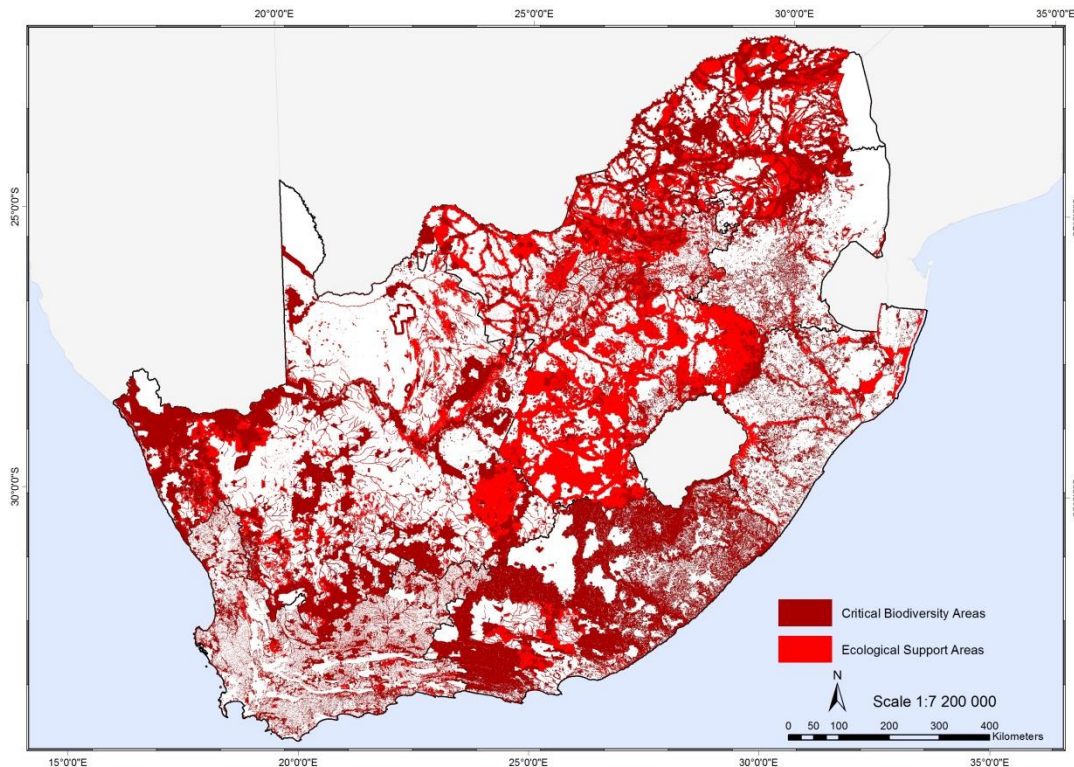
NPAES –Wind and Solar

Features	Source	Attributes	Mapping Sensitivity	Sensitivity (Wind)	Mapping Sensitivity	Sensitivity (Solar)
National Protected Areas Expansion Strategy	Department of Environmental Affairs (DEA) and Provincial	Protected areas expansion priority areas	Very high sensitivity	feature	Very high sensitivity	feature



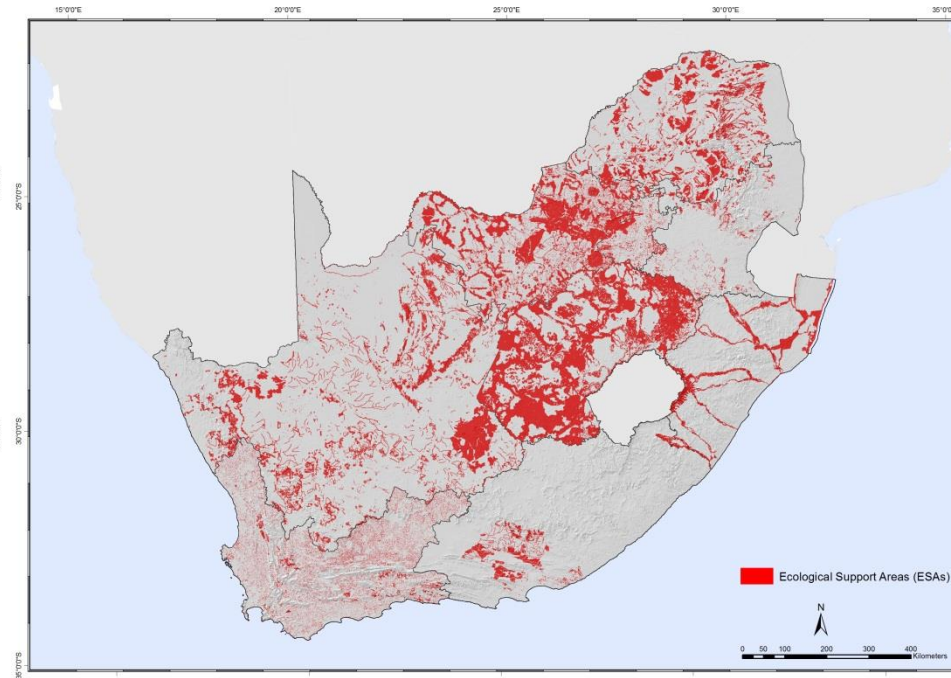
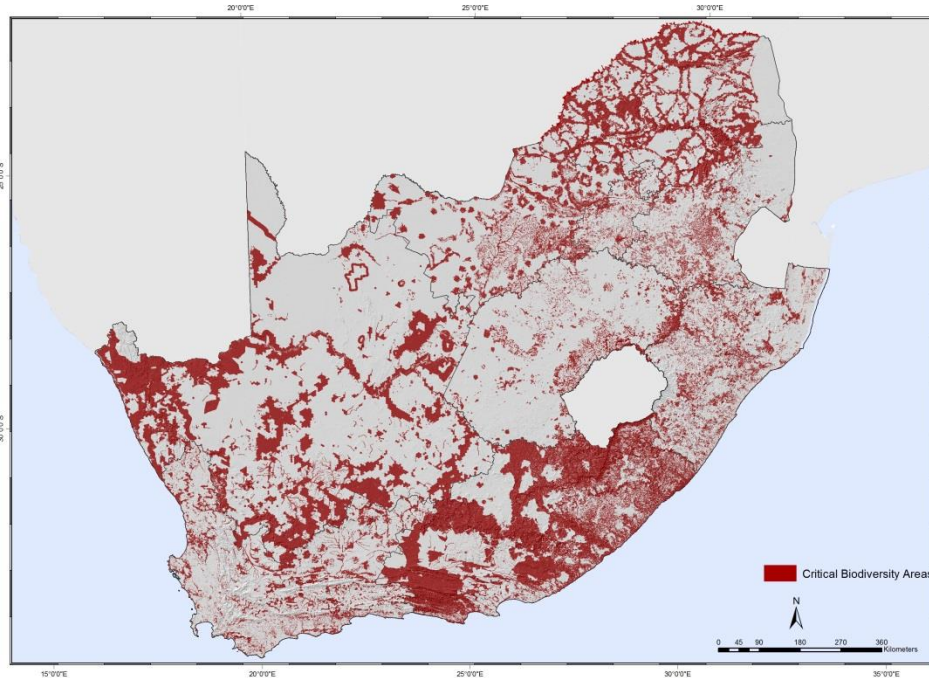
CBAs and Threatened Ecosystems -Wind

Features	Source	Attributes	Mapping Sensitivity	Sensitivity (Wind)
Critical Biodiversity Areas (CBAs) categories	Provincial	CBA	Very high sensitivity	feature
		ESA	High sensitivity	feature
Threatened Ecosystems	South African National Biodiversity Institute (SANBI) 2010	CR	Very high sensitivity	feature
		EN	High sensitivity	feature
		VU	High sensitivity	feature



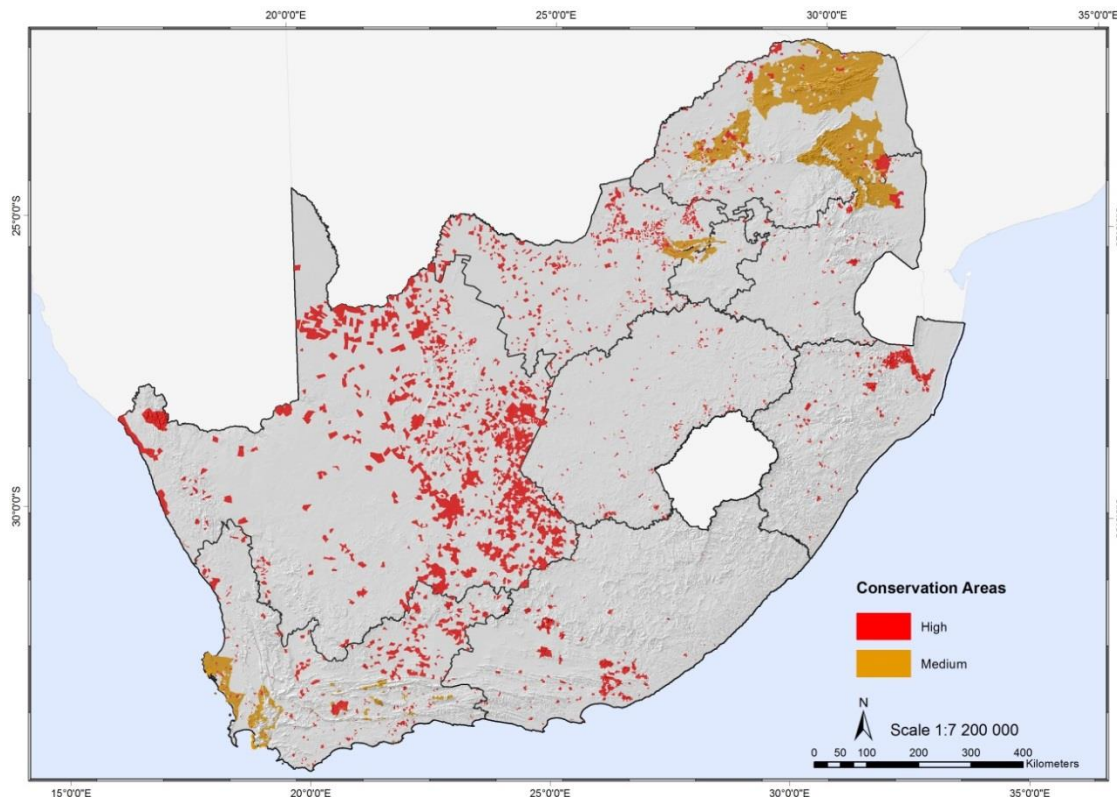
CBAs and Threatened Ecosystems -Solar

Features	Source	Attributes	Mapping Sensitivity	Sensitivity (Solar)
Critical Biodiversity Areas (CBAs) categories	Provincial	CBA	Very high sensitivity	feature
		ESA	Medium sensitivity	feature
Threatened Ecosystems	South African National Biodiversity Institute (SANBI) 2010	CR	Very high sensitivity	feature
		EN	High sensitivity	feature
		VU	High sensitivity	feature



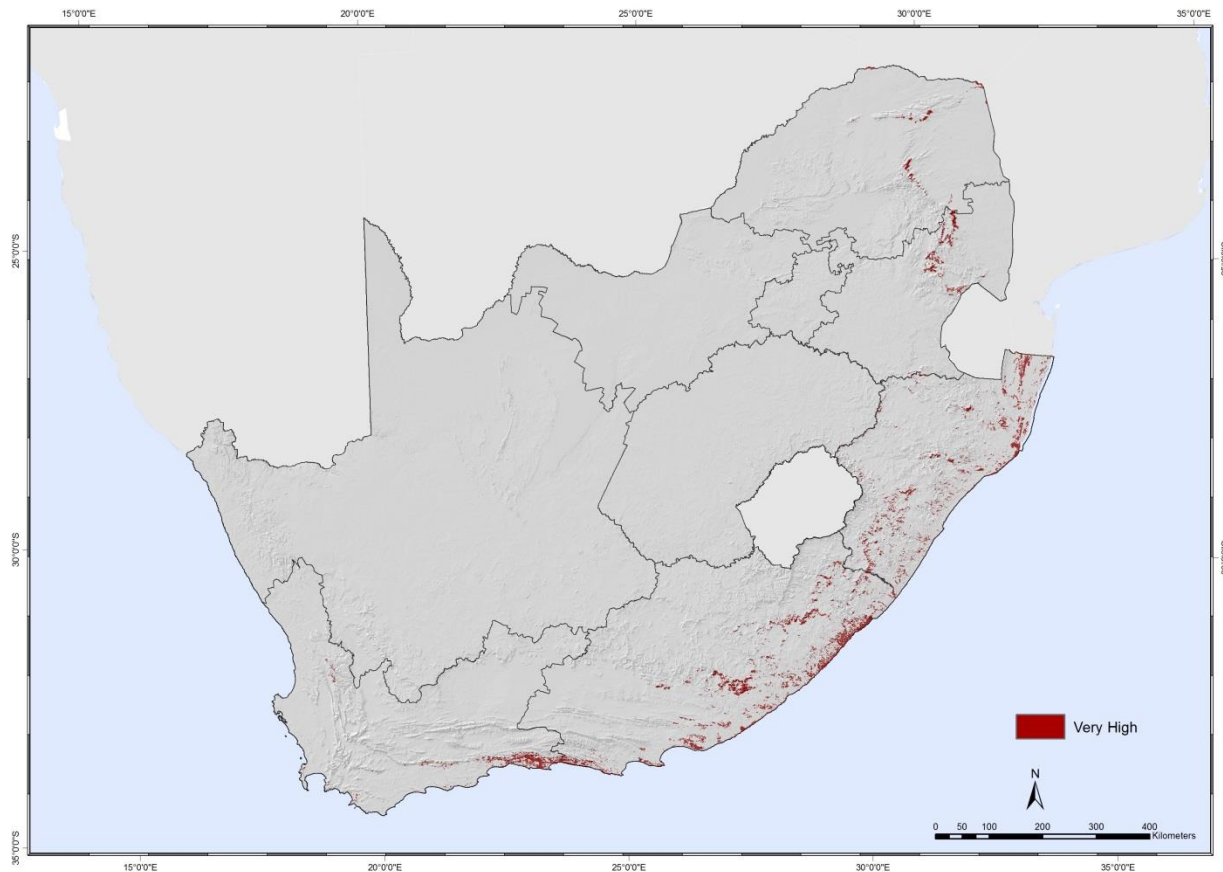
Conservation Areas – Wind and Solar

Features	Source	Attributes	Mapping Sensitivity	Sensitivity (Wind)
Conservation Areas	SACAD-Q1, 2017 and Provincial	Biosphere reserves (Not protected)	Medium sensitivity	feature
		Botanical gardens	Medium sensitivity	feature
		Ramsar Sites (not already protected)	High sensitivity	feature
		Game farms	High sensitivity	feature



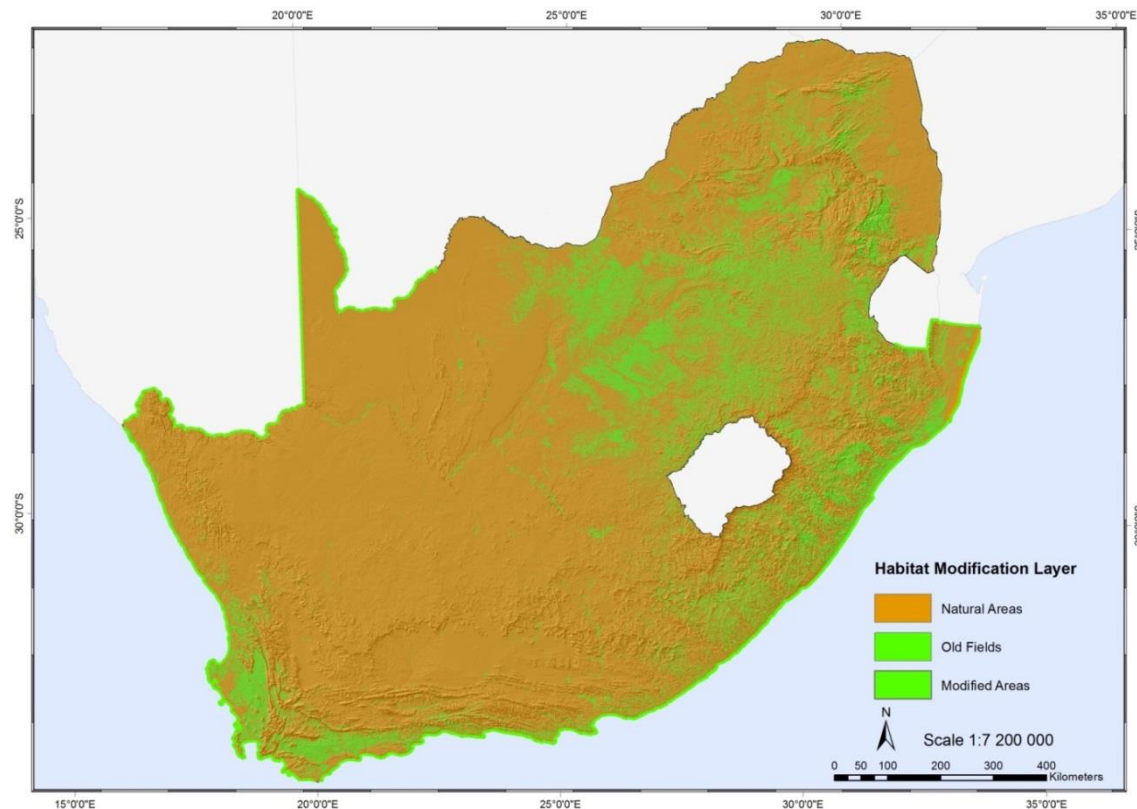
Forests – Wind and Solar

Features	Source	Attributes	Mapping Sensitivity	Sensitivity (Wind)	Mapping Sensitivity	Sensitivity (Solar)
Forests	Department of Agriculture, Forestry and Fisheries (DAFF)	Forests (National Forest Inventory)	Very high sensitivity	feature	Very high sensitivity	feature



Habitat Modification – Wind and Solar

Features	Source	Attributes	Mapping Sensitivity	Sensitivity (Wind)	Mapping Sensitivity	Sensitivity (Solar)
Habitat Modification layer	SANBI	Natural areas	Medium sensitivity	feature	Medium sensitivity	feature
		Modified areas	Low sensitivity	feature	Low sensitivity	feature
		Old fields	Low sensitivity	feature	Low sensitivity	feature



Bats - Wind

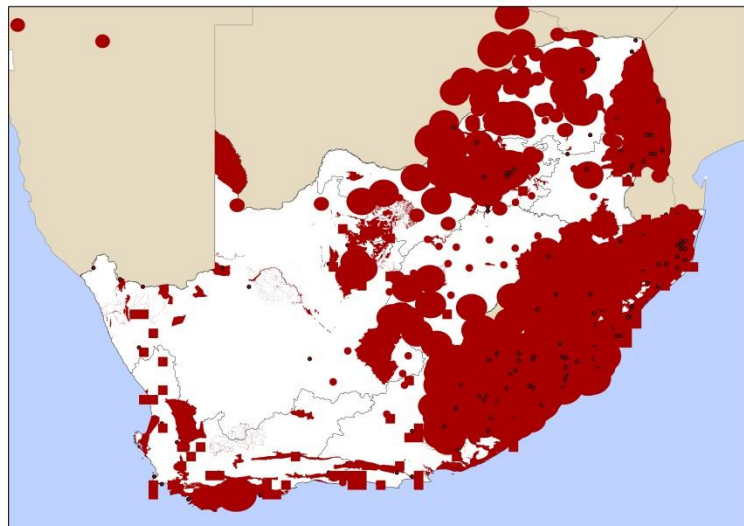
Features	Source	Attributes	Mapping Sensitivity	Sensitivity (Wind)
Bats	Roost dataset from SABAA (Kate Mc Ewan)	colony of 1 – 50 Least Concern bats + colony of 1 – 50 Low Risk Conservation Important bats	Very high sensitivity	500 m
		colony of 50 – 500 Least Concern bats + colony of 50 - 500 Low Risk Conservation Important bats + colony of 1 – 50 Med-High Risk Conservation Important bats	Very high sensitivity	1 km
		colony of >500 High Risk Least Concern bats + colony of 50 - 500 Med-High Risk Conservation Important bats + colony of 500 - 2000 Low Risk Conservation Important bats	Very high sensitivity	2.5 km
		colony of 500 - 2000 Med-High Risk Conservation Important bats	Very high sensitivity	10 km
		colony of >2000 Bats of any status or risk level	Very high sensitivity	20 km
	Ecoregions	KwaZulu-Cape coastal forest mosaic	Very high sensitivity	feature
		Maputaland-Pondoland bushland and thickets	Very high sensitivity	feature
		Maputaland coastal forest mosaic	Very high sensitivity	feature
		Zambezian and Mopane woodlands	Very high sensitivity	feature
	REDZs Phase 1 SEA: All_Bats_Absolute_Dolomite and Limestone	Dolomite and Limestone	Very high sensitivity	feature
	REDZs Phase 1 SEA: All_Bats_Absolute_Rivers and Wetlands	Rivers and Wetlands	Very high sensitivity	feature
	REDZs Phase 1 SEA: All_Bats_Absolute_Forest	Forests	Very high sensitivity	feature
	REDZs Phase 1 SEA: All_Bats_Absolute_Cropland	Cropland	Very high sensitivity	feature

Bats - Solar

Features	Source	Attributes	Mapping Sensitivity	Sensitivity (Solar)
Bats	Roost dataset from SABAA (Kate Mc Ewan)	colony of 1 – 50 Least Concern bats + colony of 1 – 50 Low Risk Conservation Important bats	N/A	N/A
		colony of 50 – 500 Least Concern bats + colony of 50 - 500 Low Risk Conservation Important bats + colony of 1 – 50 Med-High Risk Conservation Important bats	N/A	N/A
		colony of >500 High Risk Least Concern bats + colony of 50 - 500 Med-High Risk Conservation Important bats + colony of 500 - 2000 Low Risk Conservation Important bats	N/A	N/A
		colony of 500 - 2000 Med-High Risk Conservation Important bats	N/A	N/A
		colony of >2000 Bats of any status or risk level	N/A	N/A
	Ecoregions	KwaZulu-Cape coastal forest mosaic	Very high sensitivity	feature
		Maputaland-Pondoland bushland and thickets	Very high sensitivity	feature
		Maputaland coastal forest mosaic	Very high sensitivity	feature
		Zambezian and Mopane woodlands	Very high sensitivity	feature
	REDZs Phase 1 SEA: All_Bats_Absolute_Dolomite and Limestone	Dolomite and Limestone	N/A	N/A
	REDZs Phase 1 SEA: All_Bats_Absolute_Rivers and Wetlands	Rivers and Wetlands	N/A	N/A
	REDZs Phase 1 SEA: All_Bats_Absolute_Forest	Forests	N/A	N/A
	REDZs Phase 1 SEA: All_Bats_Absolute_Cropland	Cropland	N/A	N/A

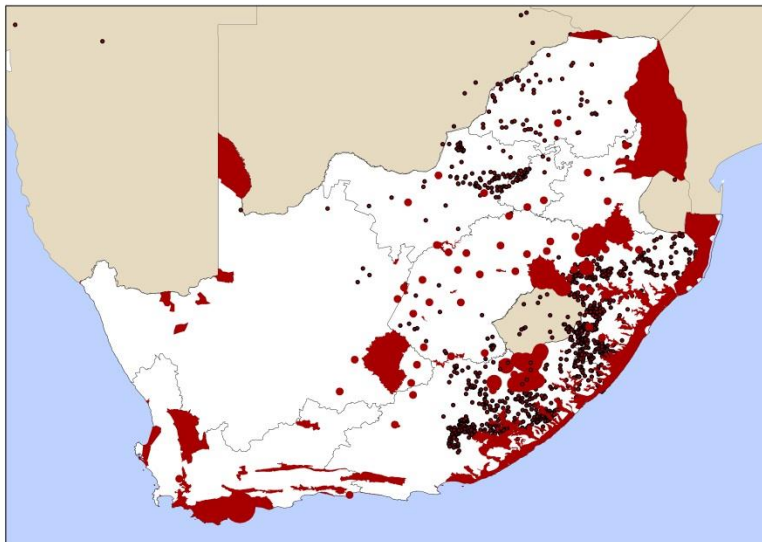
Birds - Wind

Features	Source	Attributes	Mapping Sensitivity	Sensitivity (Wind)
Birds	BirdlifeSA exclusions Phase 1 SEA	Priority colonies	Very high sensitivity	feature
		Transkei vulture IBA	Very high sensitivity	feature
		Amur nests	Very high sensitivity	10 km
		Bearded vulture nest	Very high sensitivity	feature
		FlywayVerloernvlei	Very high sensitivity	feature
		IBA exclusion	Very high sensitivity	feature
		Lesser Kestel	Very high sensitivity	10 km
		Protected Areas in IBA	Very high sensitivity	feature
		Potberg Cape Vulture	Very high sensitivity	feature
		Saldanha Flyway	Very high sensitivity	feature
	VULPRO	VULPRO cape vulture colonies	Very high sensitivity	50 km
		VULPRO cape vulture roosts	Very high sensitivity	40 km
		VULPRO cape vulture restaurants	Very high sensitivity	20 km
	NMMU	NMMU cape vulture roost sites	Very high sensitivity	40 km
	KZN wildlife	Bearded vulture collision risk model	Very high sensitivity	feature



Birds - Solar

Features	Source	Attributes	Mapping Sensitivity	Sensitivity (Solar)
Birds	BirdlifeSA exclusions Phase 1 SEA	Priority colonies	High sensitivity	feature
		Transkei vulture IBA	High sensitivity	feature
		Amur nests	High sensitivity	feature
		Bearded vulture nest	High sensitivity	feature
		FlywayVerloernvlei	High sensitivity	feature
		IBA exclusion	High sensitivity	feature
		Lesser Kestel	High sensitivity	feature
		Protected Areas in IBA	High sensitivity	feature
		Potberg Cape Vulture	High sensitivity	feature
		Saldanha Flyway	High sensitivity	feature
	VULPRO	VULPRO cape vulture colonies	High sensitivity	feature
		VULPRO cape vulture roosts	High sensitivity	feature
		VULPRO cape vulture restaurants	High sensitivity	feature
	NMMU	NMMU cape vulture roost sites	High sensitivity	feature
	KZN wildlife	Bearded vulture collision risk model	High sensitivity	feature

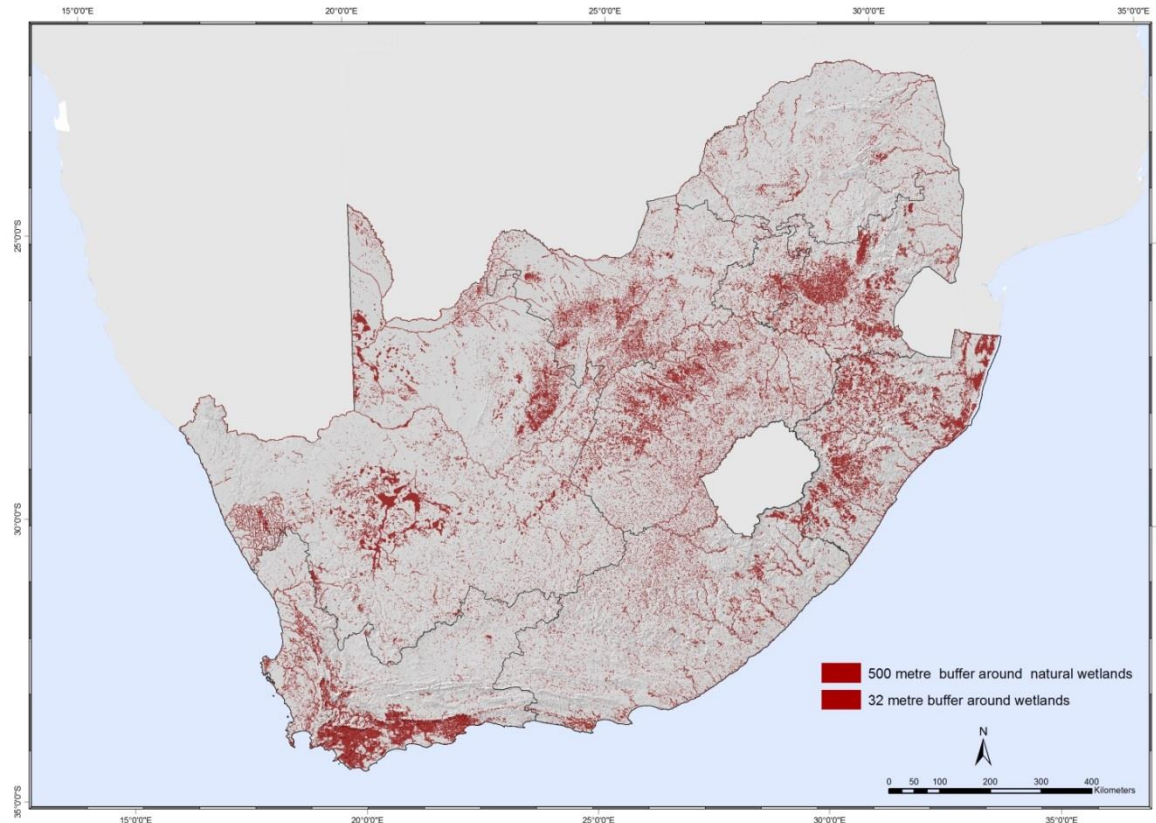


Species of Special Concern –Wind and Solar

Features	Source	Attribute	Mapping Sensitivity	Sensitivity (Wind)	Mapping Sensitivity	Sensitivity (Solar)
Species of conservation concern	Endangered Wildlife Trust (EWT), SANBI and BirdLife South Africa	Critical Habitat for highly restricted Species Global Extent of Occurrence < 10 km ²	Very high sensitivity	feature	Very high sensitivity	feature
		Confirmed occurrences of rare and threatened species	High sensitivity	feature	High sensitivity	feature
		Suitable unsurveyed habitat for threatened, rare and data deficient species.	Medium sensitivity	feature	Medium sensitivity	feature
		No known or expected threatened or rare species.	Low sensitivity	feature	Low sensitivity	feature

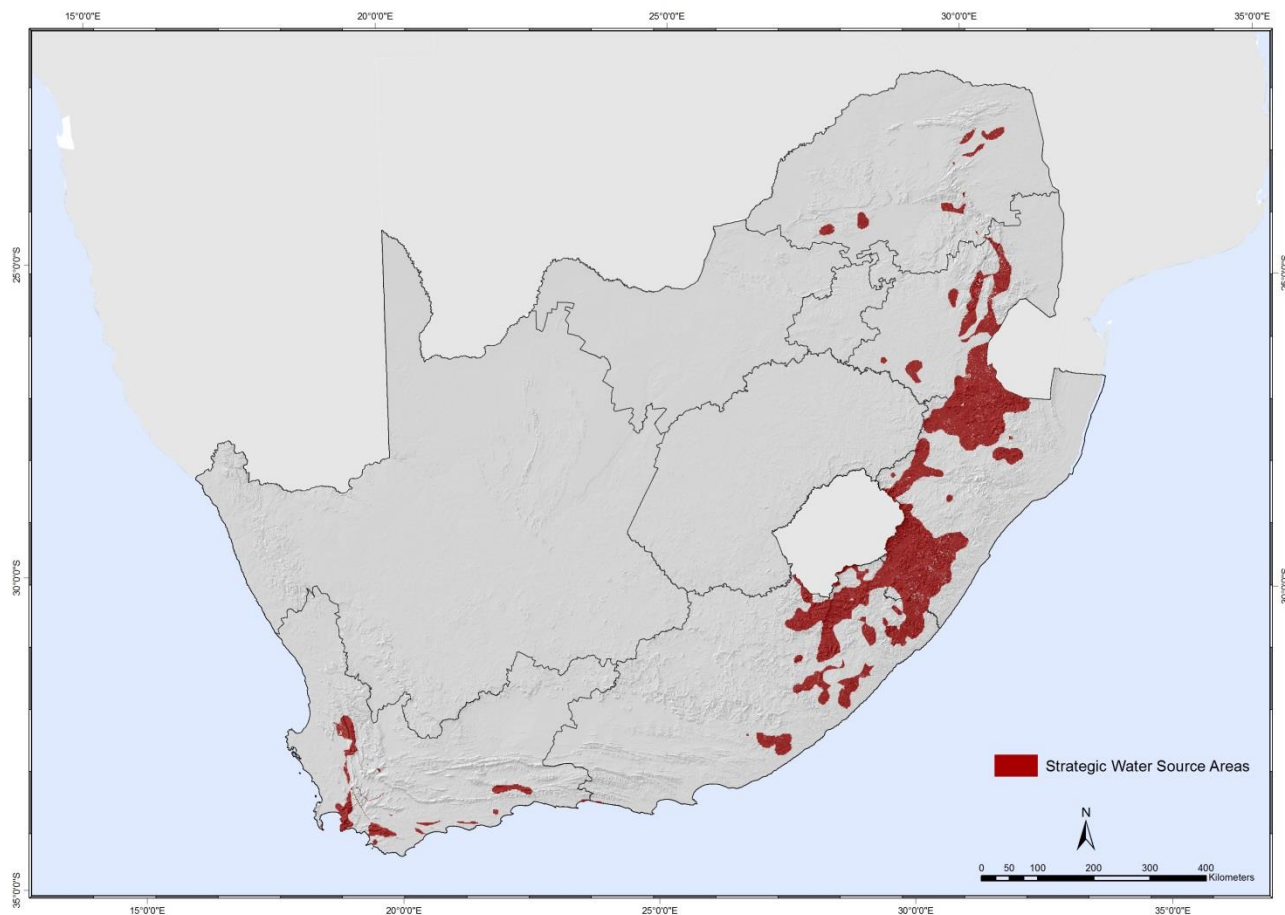
Freshwater Features – Wind and Solar

Features	Source	Attributes	Mapping Sensitivity	Sensitivity (Wind)	Mapping Sensitivity	Sensitivity (Solar)
Freshwater Feature buffers	NFEPA	500m buffer around Wetlands	Very high sensitivity	500m	Very high sensitivity	500m
		32 m buffer around Rivers	Very high sensitivity	32m	Very high sensitivity	32m



Strategic Water Source Areas – Wind and Solar

Features	Source	Attributes	Mapping Sensitivity	Sensitivity (Wind)	Mapping Sensitivity	Sensitivity (Solar)
Strategic Water Source Areas (SWSAs)	Council for Scientific and Industrial Research (CSIR)	SWSAs (Natural areas)	Very high sensitivity	feature	Very high sensitivity	feature



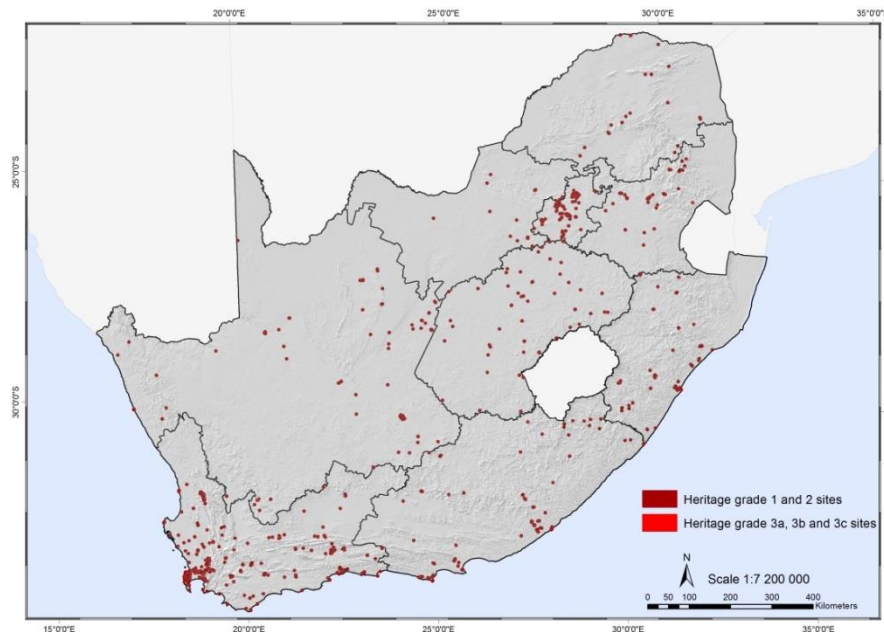
Estuaries – Wind and Solar

Features	Source	Attributes	Mapping Sensitivity	Sensitivity (Wind)	Mapping Sensitivity	Sensitivity (Solar)
Estuaries	National Biodiversity Assessment (NBA) 2011	All estuaries	Very high sensitivity	feature	Very high sensitivity	feature



Heritage and UNESCO Tentative Sites – Wind and Solar

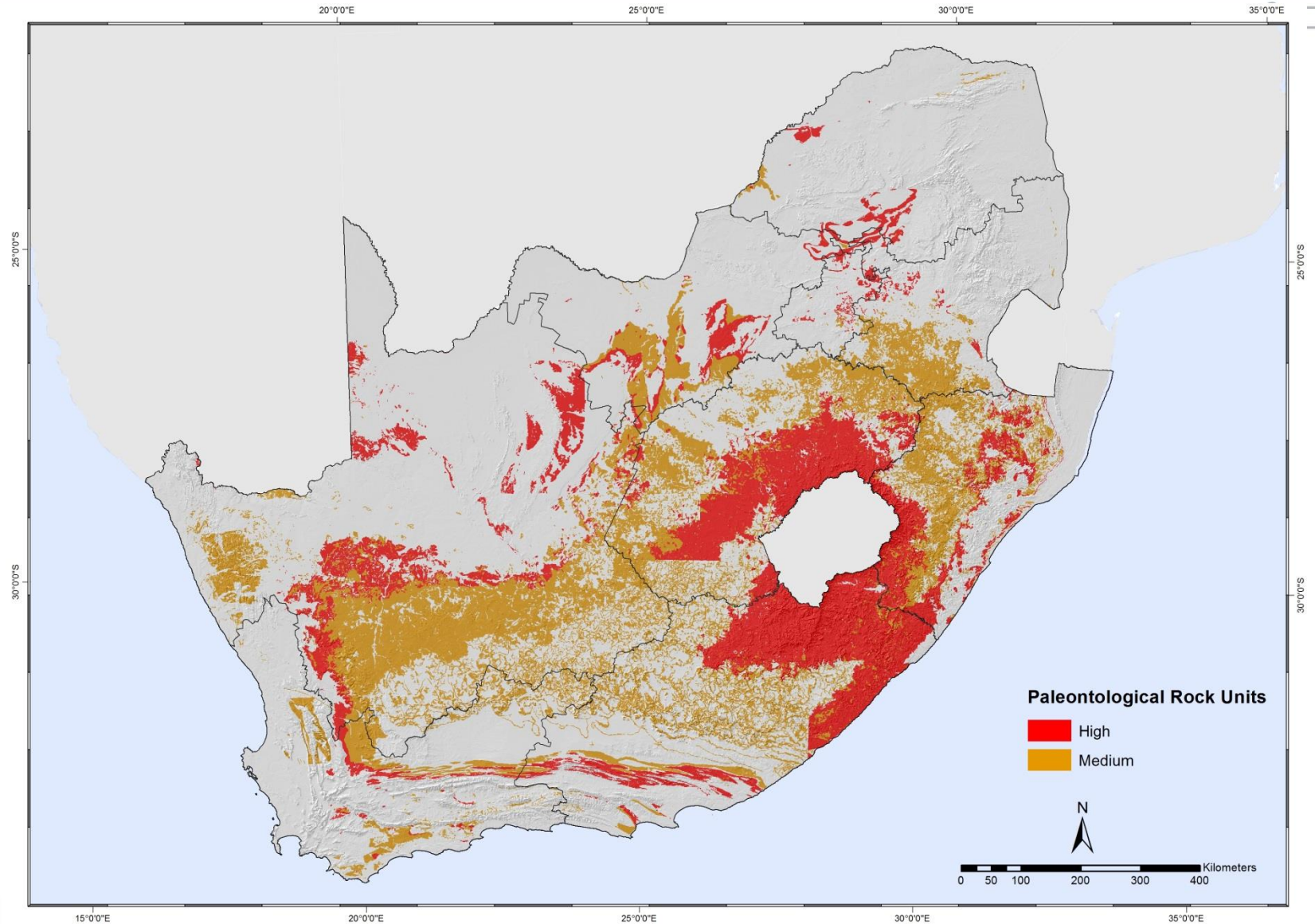
Features	Source	Attributes	Mapping Sensitivity	Sensitivity (Wind)	Mapping Sensitivity	Sensitivity (Solar)
UNESCO tentative sites	UNESCO website / SAHRA	UNESCO tentative sites	High sensitivity	feature	High sensitivity	feature
Heritage	Electricity Grid Infrastructure (EGI) dataset	Grade I sites	Very high sensitivity	feature (1km buffer - EGI)	Very high sensitivity	feature (1km buffer - EGI)
		Grade II sites	Very high sensitivity	1km	Very high sensitivity	1km
		Grade IIIa sites	High sensitivity	150m	High sensitivity	150m
		Grade IIIb sites	High sensitivity	50m	High sensitivity	50m
		Grade IIIc sites	High sensitivity	30m	High sensitivity	30m



Palaeontology – Wind and Solar

Features	Source	Attributes	Mapping Sensitivity	Sensitivity (Wind)	Mapping Sensitivity	Sensitivity (Solar)
Paleontological heritage resources	CSIR	ADELAIDE, ASBESTOS HILLS, BOEGOEBERG DAM, BOTHAVILLE, BRULSAND, CAMPBELL RAND, CLARENS, DRAKENSBERG, DWYKA, ECCA, ELLIOT, ENON, GHAAP, KAMEELDOORNS, KOEGAS, KUIBIS, MATSAP, MOLTENO, PRINCE ALBERT, RIETGAT, SCHMIDTSDRIF, SCHWARZRAND, STALHOEK, SULTANAOORD, TARKASTAD, VRYBURG, WHITEHILL, WITTEBERG	High sensitivity	feature	High sensitivity	feature
		ACHAB, ALLANRIDGE, BIDOUW, BREDASDORP, CERES, CONCORDIA GRANITE, DWYKA, FORT BROWN, GESELSKAPBANK, GLADKOP, GRAHAMSTOWN, HARTEBEEST PAN GRANITE, HOOGOOR, KALAHARI, KAMIESKROON GNEISS, KAROO DOLERITE, KHURISBERG, KONKYP GNEISS, KOOKFONTEIN, KORRIDOR, MESKLIP GNEISS, MODDERFONTEIN GRANITE/GNEISS, NAAB, NABABEEP GNEISS, NAKANAS, NARDOUW, NUWEFONTEIN GRANITE, RIETBERG GRANITE, SKOORSTEENBERG, STINKFONTEIN, STYGER KRAAL SYENITE, TABLE MOUNTAIN, TIERBERG, VOLKSRUST, WATERFORD	Medium sensitivity	feature	Medium sensitivity	feature

Palaeontology – Wind and Solar



Visual - Wind

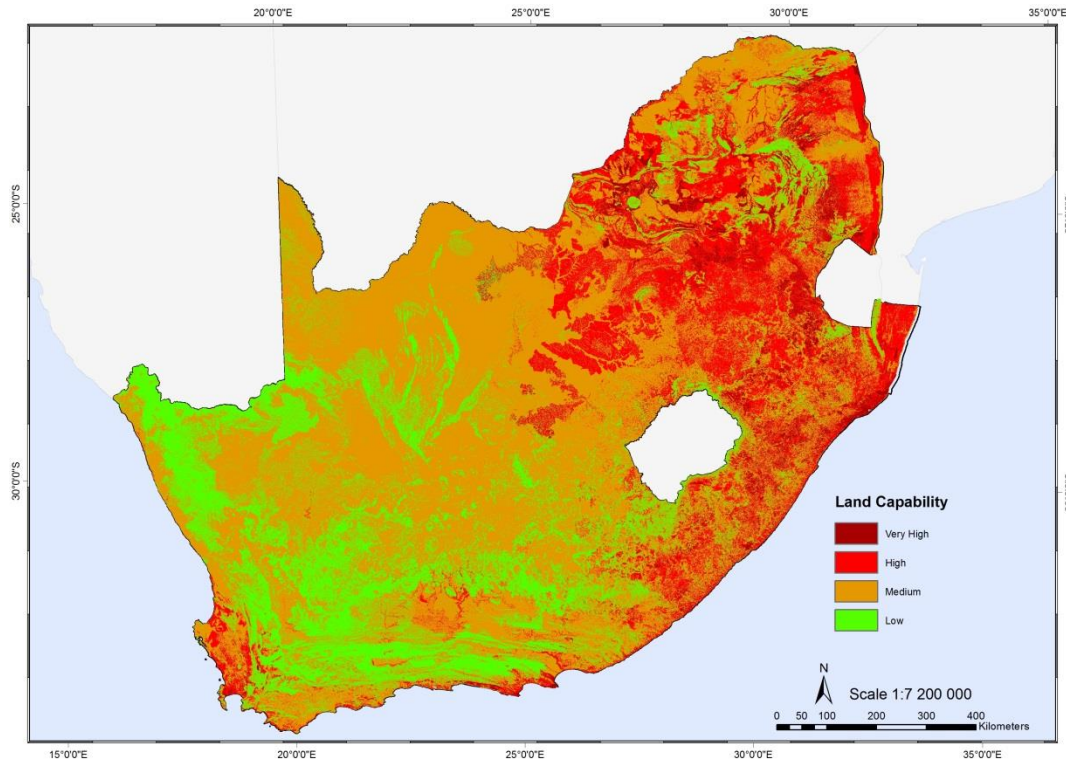
Features	Source	Attributes	Mapping Sensitivity	Sensitivity (Wind)
Visual	DEM or NGI	Mountain Ranges	Very high sensitivity	feature
	DEM or NGI	Slopes > 25% or 1:4	Very high sensitivity	feature
	NFEPA 2011	Major River	High sensitivity	32-500 m
	SANBI dataset	Coastal zones	High sensitivity	1-2 km
			Medium sensitivity	2-4 km
			Very high sensitivity	0-5 km
	SAPAD - Q1, 2017 and South African Conservation Areas Database (SACAD) -Q1,2017	Protected Areas, Private reserves and game farm	High sensitivity	5-10 km
			Medium sensitivity	10-20 km
			Low sensitivity	>20 km
	DEA dataset	SALT	Very high sensitivity	0-25 km
			Medium sensitivity	25-75 km
	SANBI dataset	Hearitage feature: Grade I sites	Very high sensitivity	0-1 km
			Medium sensitivity	1-1.5 km
		Hearitage feature: Grade II sites	Very high sensitivity	0-1 km
			Medium sensitivity	1-1.5 km
		Hearitage feature: Grade IIIa sites	Very high sensitivity	0 -150 m
			Medium sensitivity	150 m - 1.5 km
		Hearitage feature: Grade IIIb sites	Very high sensitivity	0-50m
			Medium sensitivity	50 m - 1.5 km
		Heritage feature: Grade IIIc sites	Very high sensitivity	0-30m
			Medium sensitivity	30 m - 1.5 km
	AfriGIS Towns – 2015	Town, villages and settlements outside large urban areas	Very high sensitivity	0-2 km
			High sensitivity	2-4 km
			Medium sensitivity	4-6 km
	SANBI dataset	National roads and scenic routes	Very high sensitivity	0-1 km
			High sensitivity	1-3 km
			Medium sensitivity	3-5 km
	CSIR	Western Cape Routes	Very high sensitivity	1km

Visual - Solar

Features	Source	Attributes	Mapping Sensitivity	Sensitivity (Solar)
Visual	DEM or NGI	Mountain Ranges	very high sensitivity	feature
	DEM or NGI	Slopes > 25% or 1:4	very high sensitivity	feature
	NFEPA 2011	Major River	High sensitivity	32-500 m
	SANBI dataset	Coastal zones	Medium sensitivity	1-4 km
	SAPAD - Q1, 2017 and South African Conservation Areas Database (SACAD) - Q1,2017	Protected Areas, Private reserves and game farm	Very high sensitivity	0-2.5 km
			High sensitivity	2.5-5 km
			Medium sensitivity	5-10 km
			Low sensitivity	>10 km
	DEA dataset	SALT	Very high sensitivity	0-25 km
			Medium sensitivity	25-75 km
	SANBI dataset	Hearitage feature: Grade I sites	Very high sensitivity	0-1 km
			Medium sensitivity	1-1.5 km
		Hearitage feature: Grade II sites	Very high sensitivity	0-1 km
			Medium sensitivity	1-1.5 km
		Hearitage feature: Grade IIIa sites	Very high sensitivity	0 -150 m
			Medium sensitivity	150 m - 1.5 km
		Hearitage feature: Grade IIIb sites	Very high sensitivity	0-50m
			Medium sensitivity	50 m - 1.5 km
	AfriGIS Towns – 2015	Town, villages and settlements outside large urban areas	Very high sensitivity	0-30m
			Medium sensitivity	30 m - 1.5 km
			Very high sensitivity	0-500 m
	SANBI dataset	National roads and scenic routes	High sensitivity	500 m - 1 km
			Medium sensitivity	1 km-2 km
			Very high sensitivity	0-500m
	CSIR	Western Cape Routes	High sensitivity	500m-1km
			Medium sensitivity	1 km-2 km
			Very high sensitivity	1km

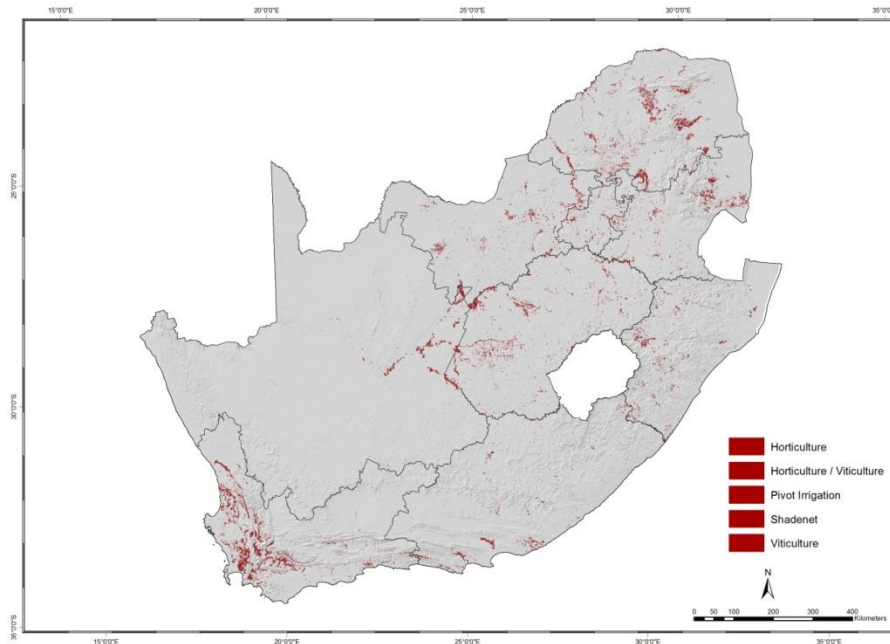
Land Capability – Wind and Solar

Features	Source	Attributes	Mapping Sensitivity	Sensitivity (Wind)	Mapping Sensitivity	Sensitivity (Solar)
Land Capability	DAFF	Land capability features with values ranging from 11-15	Very high sensitivity	feature	Very high sensitivity	feature
		Land capability features with values ranging from 9-10	High sensitivity	feature	High sensitivity	feature
		Land capability features class 6 to 8	Medium sensitivity	feature	Medium sensitivity	feature
		Land capability features class 1 to 5	Low sensitivity	feature	Low sensitivity	feature



Field Crop Boundaries – Wind and Solar

Features	Source	Attributes	Mapping Sensitivity	Sensitivity (Wind)	Mapping Sensitivity	Sensitivity (Solar)
Field crop boundaries	December 2015 release of the Field crop boundary data set or any newer released version thereafter	Irrigated Areas	Very high sensitivity	feature	Very high sensitivity	feature
		Shaedenet	Very high sensitivity	feature	Very high sensitivity	feature
		Viticulture	Very high sensitivity	feature	Very high sensitivity	feature
		Horticulture	Very high sensitivity	feature	Very high sensitivity	feature
		Remaining cultivated areas	High sensitivity	feature	High sensitivity	feature



Demarcated High Value Agricultural Land – Wind and Solar

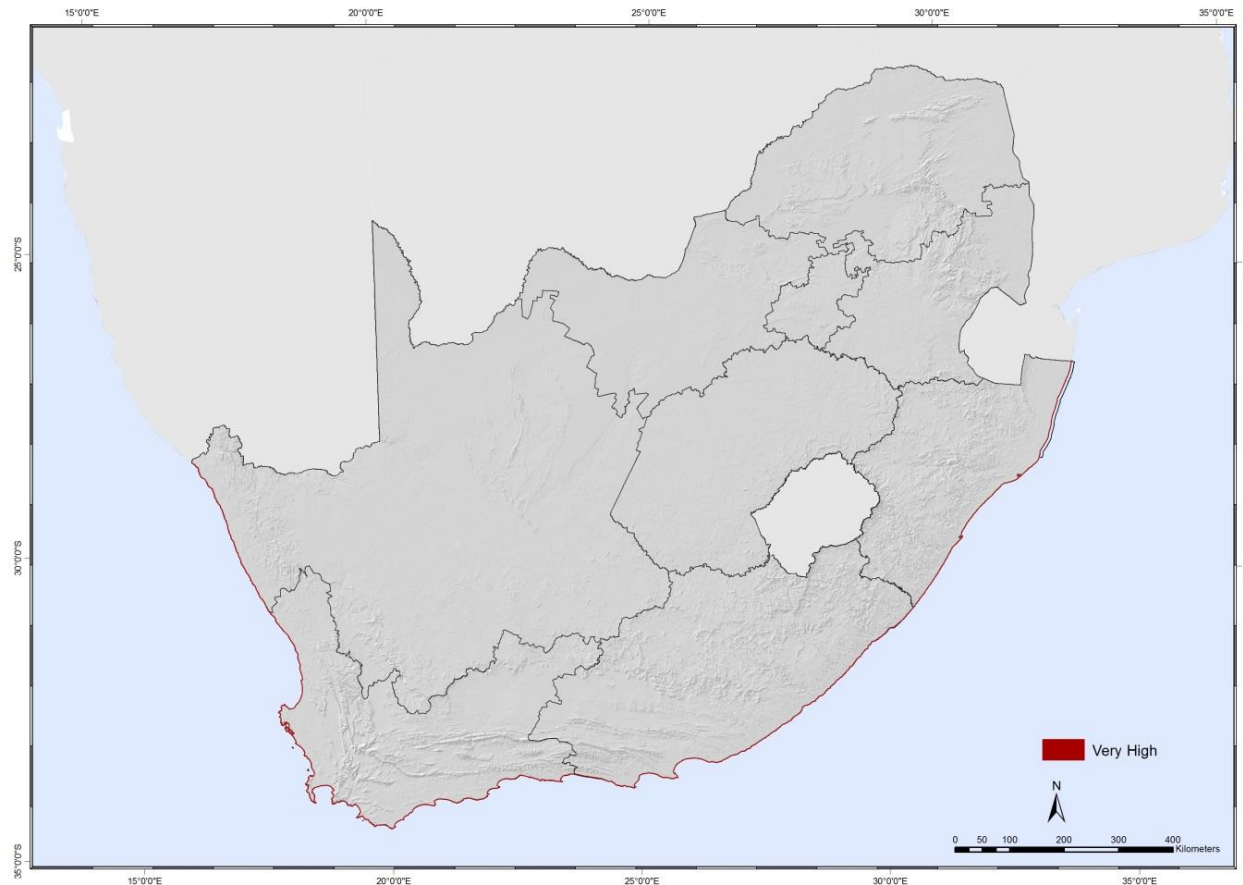
Features	Source	Attributes	Mapping Sensitivity	Sensitivity (Wind)	Mapping Sensitivity	Sensitivity (Solar)
Demarcated high value agricultural	DAFF - New PDALB requires the demarcation of high value agricultural areas which is a combination of land capability; crop suitability, agricultural land uses etc on a priority rating	areas with a priority rating of A & B	Very high sensitivity	feature	Very high sensitivity	feature
		areas with a priority rating of C & D	High sensitivity	feature	High sensitivity	feature

Mining – Wind and Solar

Feature	Source	Attributes	Mapping Sensitivity	Sensitivity (Wind)	Mapping Sensitivity	Sensitivity (Solar)
Mining	CGS	Abandoned mines	Low sensitivity	feature	Low sensitivity	feature
		Active mines	Very high sensitivity	feature	Very high sensitivity	feature
		Prospecting rights	Very high sensitivity	feature	Very high sensitivity	feature
		Mining rights	Very high sensitivity	feature	Very high sensitivity	feature

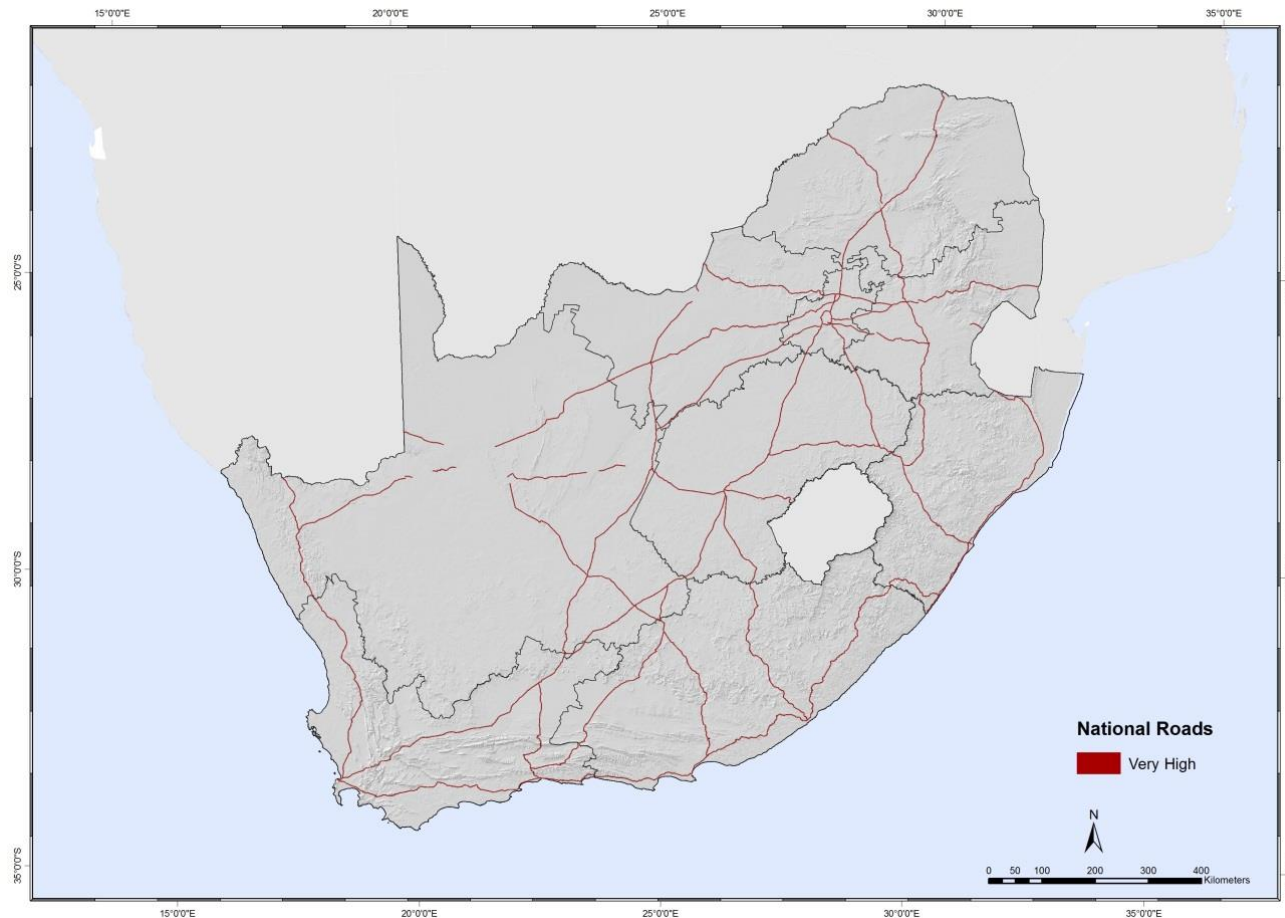
Coastline – Wind and Solar

Features	Source	Attributes	Mapping Sensitivity	Sensitivity (Wind)	Mapping Sensitivity	Sensitivity (Solar)
Coastline	Department of Rural Development and Land Reform (DRDLR)	Buffered coastline (1km)	Very high sensitivity	1km	Very high sensitivity	1km



Major Roads – Wind and Solar

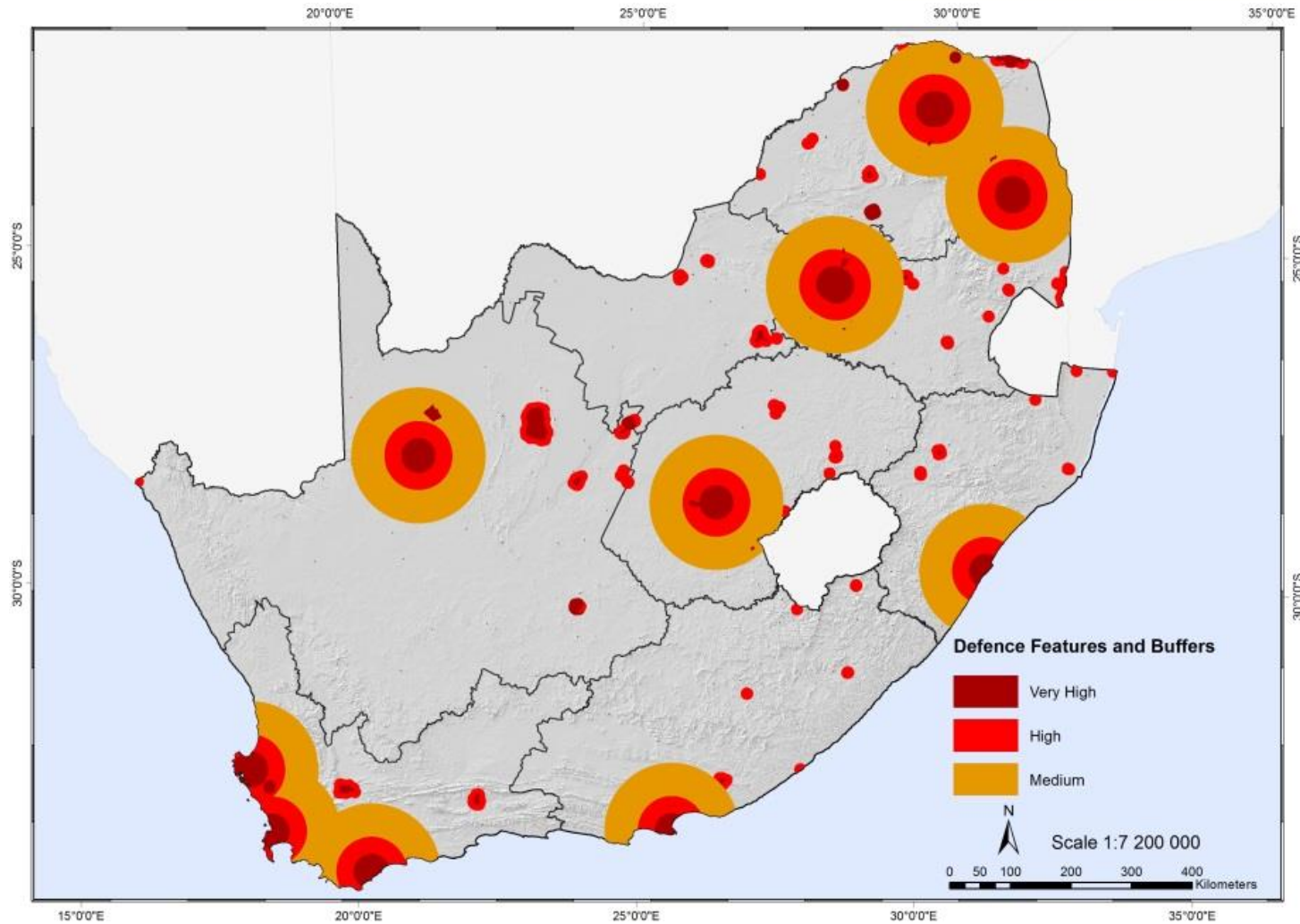
Features	Source	Attributes	Mapping Sensitivity	Sensitivity (Wind)	Mapping Sensitivity	Sensitivity (Solar)
Major roads	SANBI dataset	Major Roads	Very high sensitivity	1km	Very high sensitivity	1km



Defence - Wind

Features	Source	Attributes	Mapping Sensitivity	Sensitivity (Wind)
Defence	EGI dataset	Forward Airfield	Very high sensitivity	10 km
		Air Force Bases	Very high sensitivity	28 km
			High sensitivity	56 km
			Medium sensitivity	111 km
		High Sites	Very high sensitivity	1km
		Military Bases	Very high sensitivity	1km
			High sensitivity	10 km
		Operational Military Bases	Very high sensitivity	1km
			High sensitivity	10 km
		Shooting Ranges	Very high sensitivity	1km
			High sensitivity	10 km
		Military Training Areas	Very high sensitivity	1km
			High sensitivity	10 km
		Ammunition Depots	Very high sensitivity	10km
		Bombing Ranges	Very high sensitivity	28km
			High sensitivity	28 - 56km
			Medium sensitivity	56-111km
		Border Posts	Very high sensitivity	1km
		All Other DoD features (Including Naval Bases, Housing, Offices ect)	feature	feature

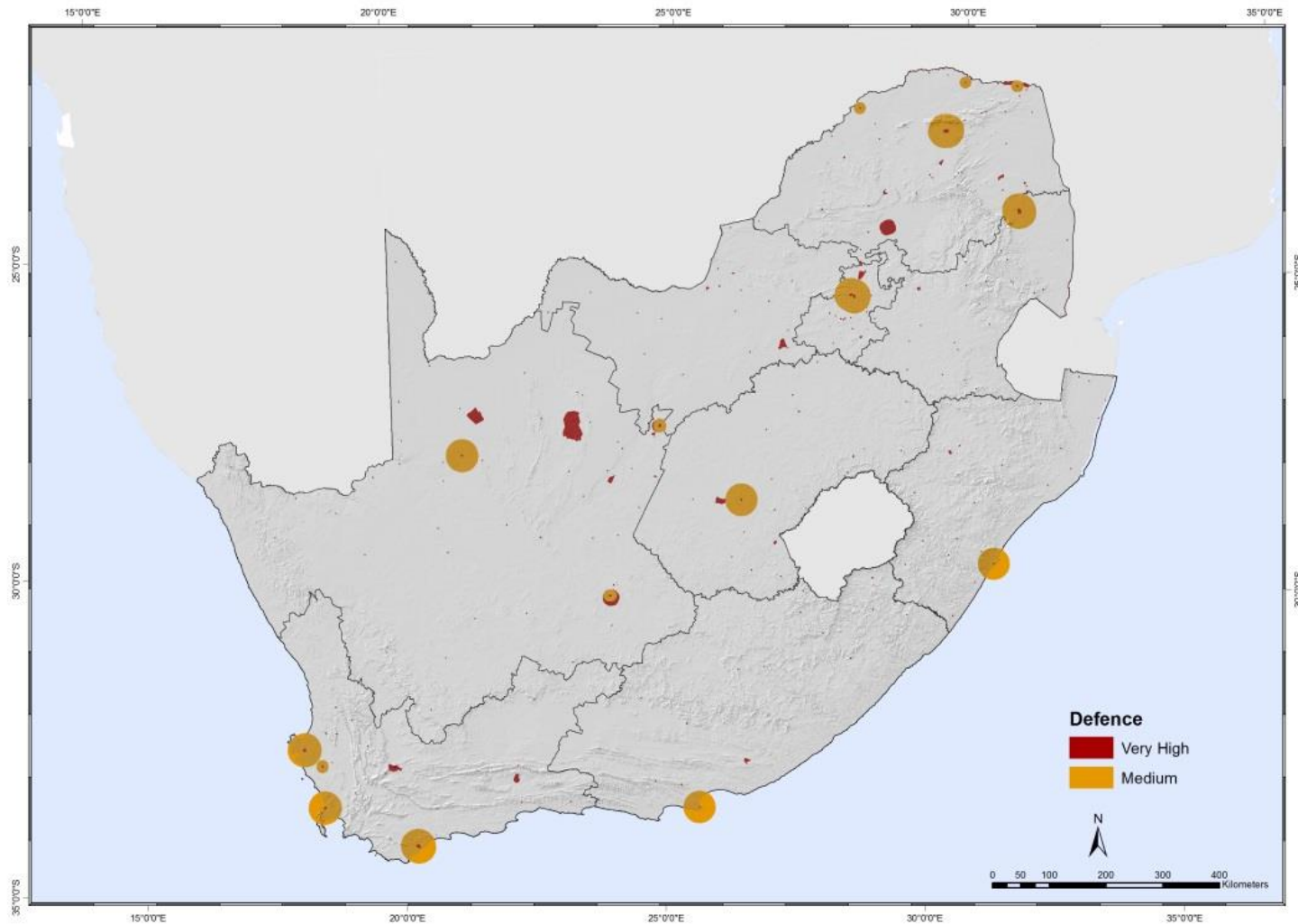
Defence - Wind



Defence - Solar

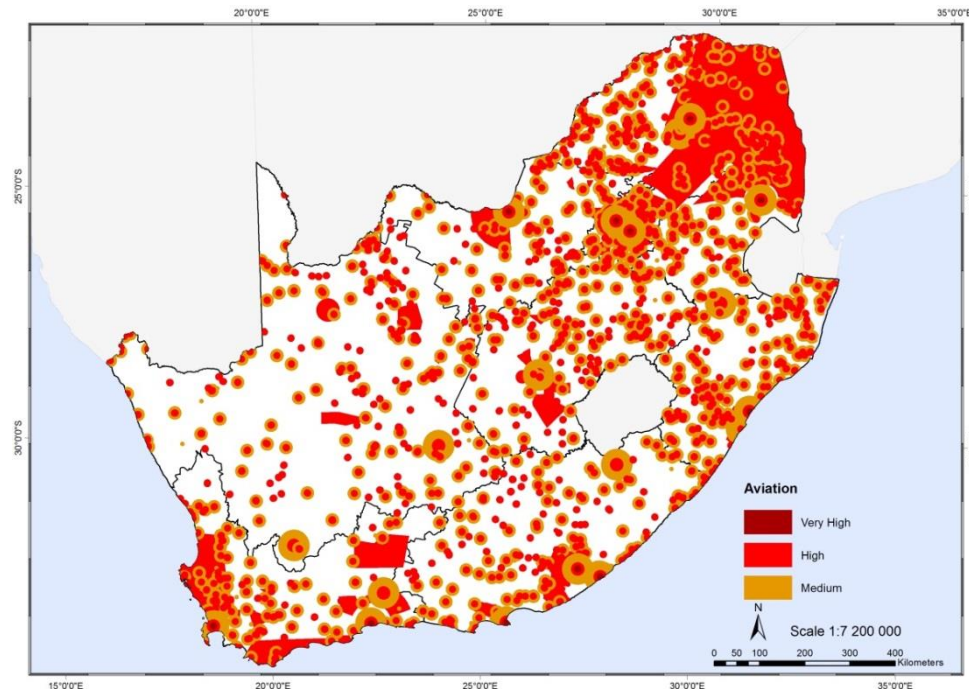
Features	Source	Attributes	Mapping Sensitivity	Sensitivity (Solar)
Defence	EGI dataset	Forward Airfield	Very high sensitivity	1 km
			Medium sensitivity	10 km
		Air Force Bases	Very high sensitivity	1 km
			Medium sensitivity	28 km
		High Sites	Very high sensitivity	1 km
		Military Bases	Very high sensitivity	1 km
		Operational Military Bases	Very high sensitivity	1 km
		Shooting Ranges	Very high sensitivity	1 km
		Military Training Areas	Very high sensitivity	1 km
		Ammunition Depots	Very high sensitivity	10 km
		Bombing Ranges	Very high sensitivity	28km
			High sensitivity	28 - 56km
			Medium sensitivity	56-111km
		Border Posts	Very high sensitivity	1km
		All Other DoD features (Including Naval Bases, Housing, Offices ect)	feature	feature

Defence - Solar



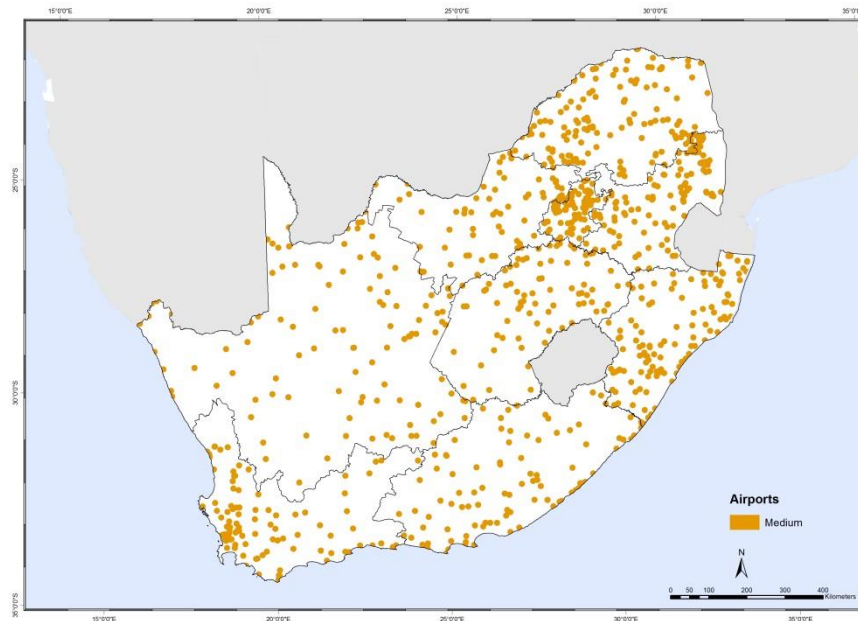
Civil Aviation - Wind

Features	Source	Attributes	Mapping Sensitivity	Sensitivity (Wind)
Airports (major, landing strips, small aerodromes)	REDZs 1 SEA dataset and EGI SEA dataset for additional features	Major Airports	Very high sensitivity	8 km
			High sensitivity	8-15 km
			Medium sensitivity	15-35 km
		Landing strips other civil aviation aerodromes (small aerodromes)	High sensitivity	8 km
			Medium sensitivity	8-15 km
Civil Aviation	REDZs 1 SEA dataset	Civil Aviation radars	Very high sensitivity	0-15 km
			Medium sensitivity	15-35 km
		Air traffic control and navigation sites	Medium sensitivity	0-5 km
		Danger and restricted airspace	High sensitivity	feature



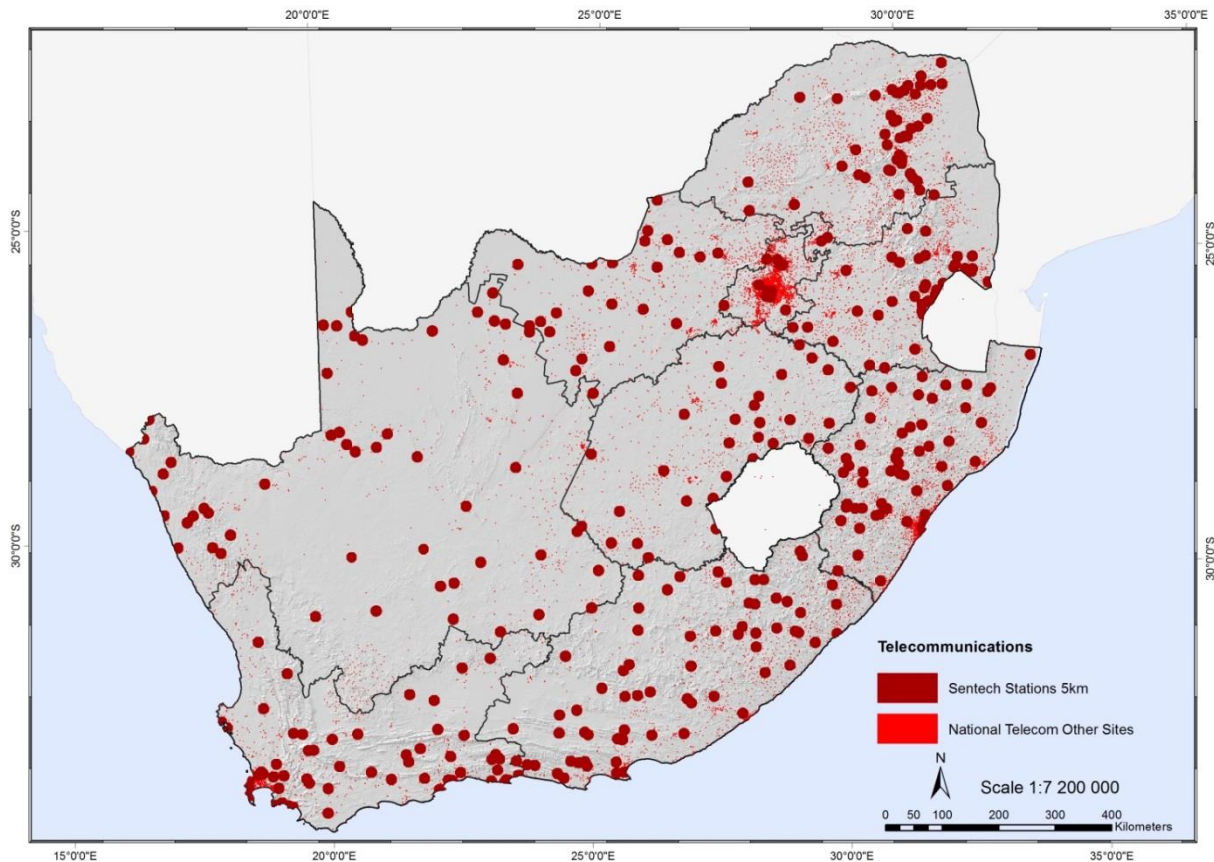
Civil Aviation - Solar

Features	Source	Attributes	Mapping Sensitivity	Sensitivity (Solar)
Airports (major, landing strips, small aerodromes)	REDZs 1 SEA dataset and EGI SEA dataset for additional features	Major Airports	Medium sensitivity	8 km
		Landing strips	Medium Sensitivity	8-15km
		other civil aviation aerodromes (small aerodromes)	Medium sensitivity	8 km
Civil Aviation	REDZs 1 SEA dataset	Civil Aviation radars	N/A	N/A
			N/A	N/A
		Air traffic control and navigation sites	N/A	N/A
		Danger and restricted airspace	N/A	N/A



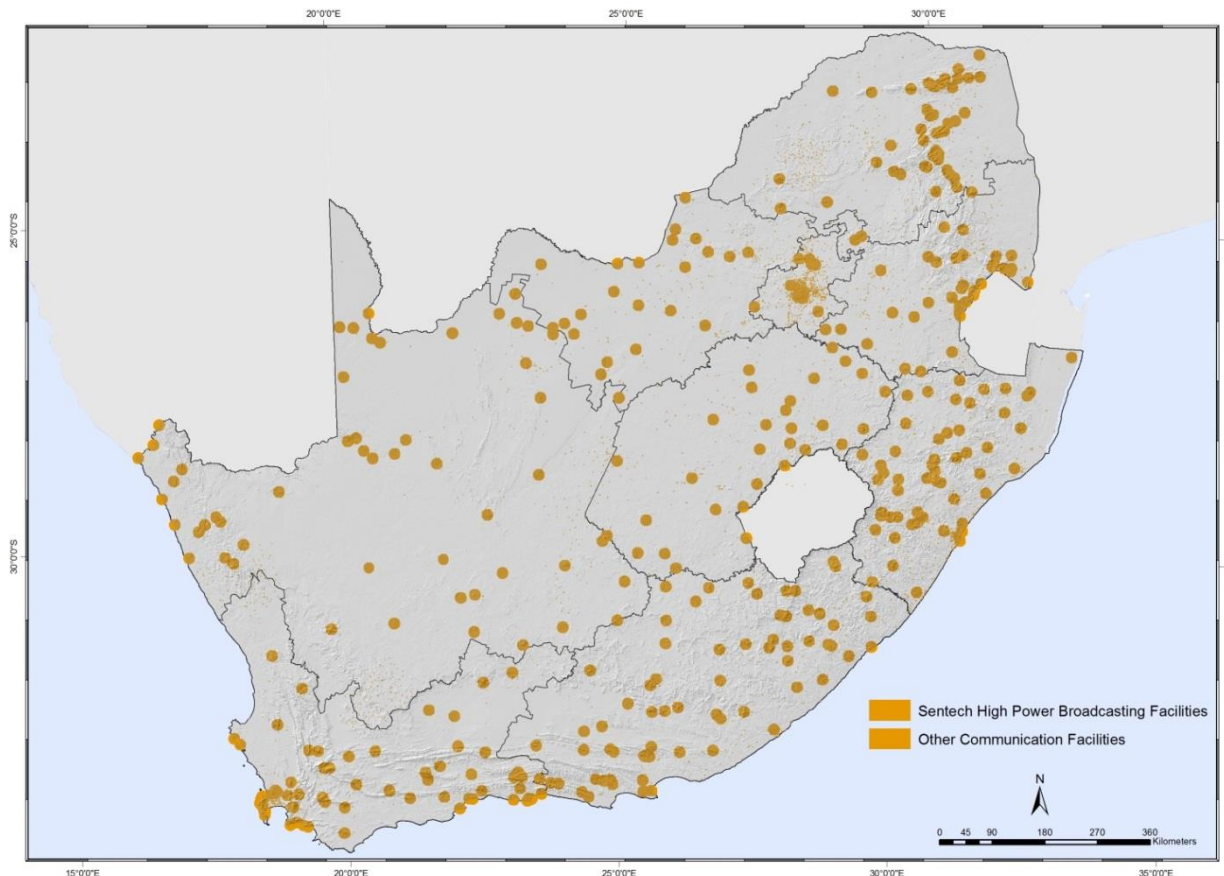
Telecommunications Towers - Wind

Features	Source	Attributes	Mapping Sensitivity	Sensitivity (Wind)
Telecommunication Towers	REDZs 1 SEA dataset	Sentech High Power Terrestrial Broadcasting Facilities	Very high sensitivity	5km
		Other Communication Facilities	High sensitivity	1km



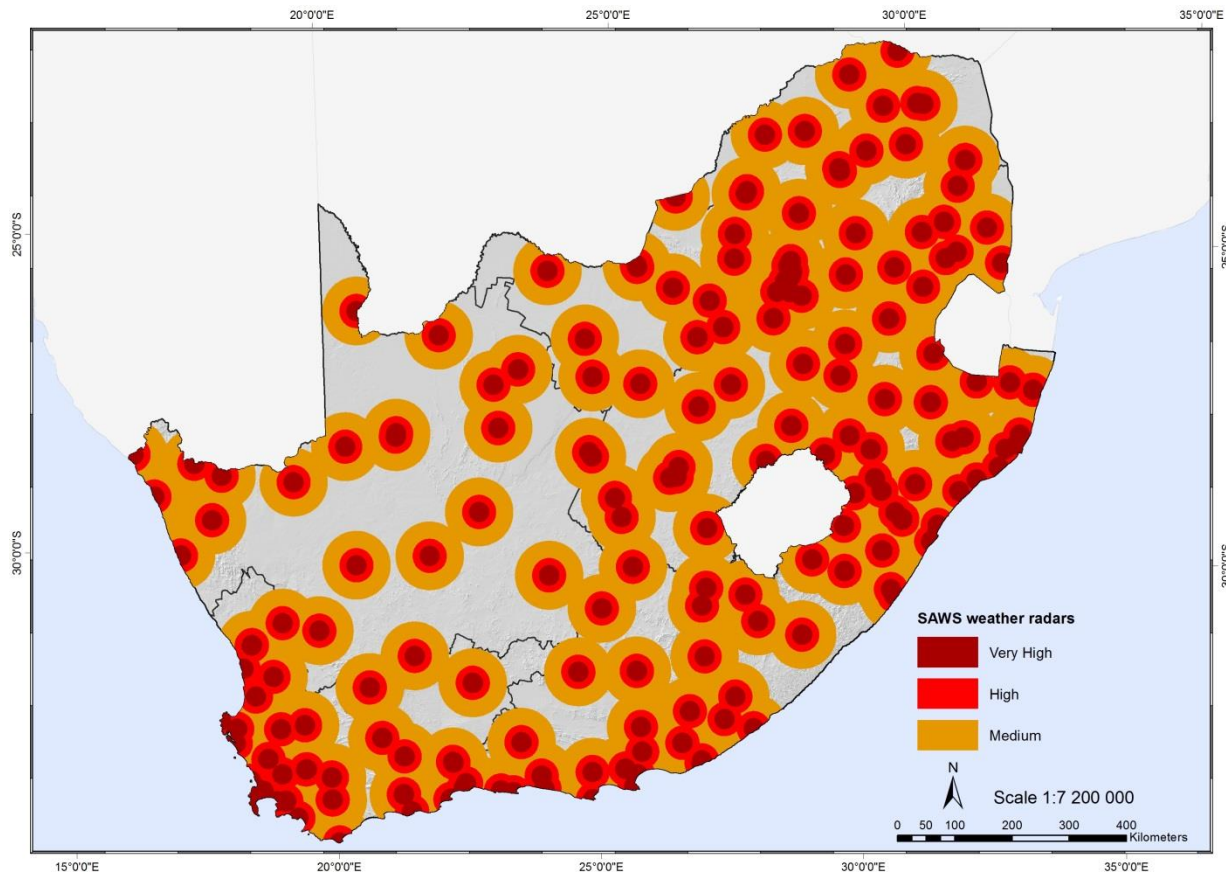
Telecommunications Towers - Solar

Features	Source	Attributes	Mapping Sensitivity	Sensitivity (Solar)
Telecommunication Towers	REDZs 1 SEA dataset	Sentech High Power Terrestrial Broadcasting Facilities	Medium sensitivity	5km
		Other Communication Facilities	Medium sensitivity	1km



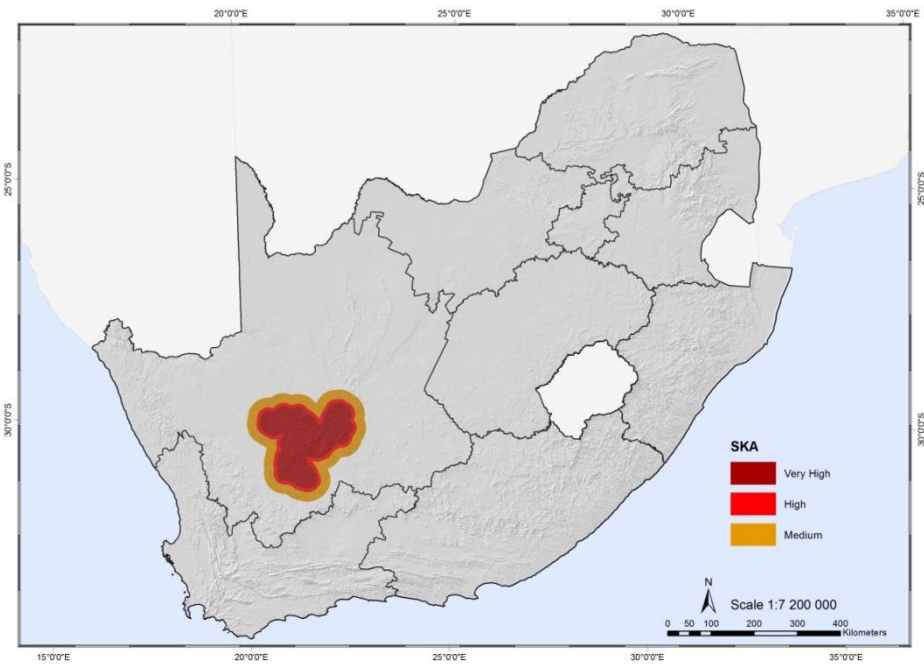
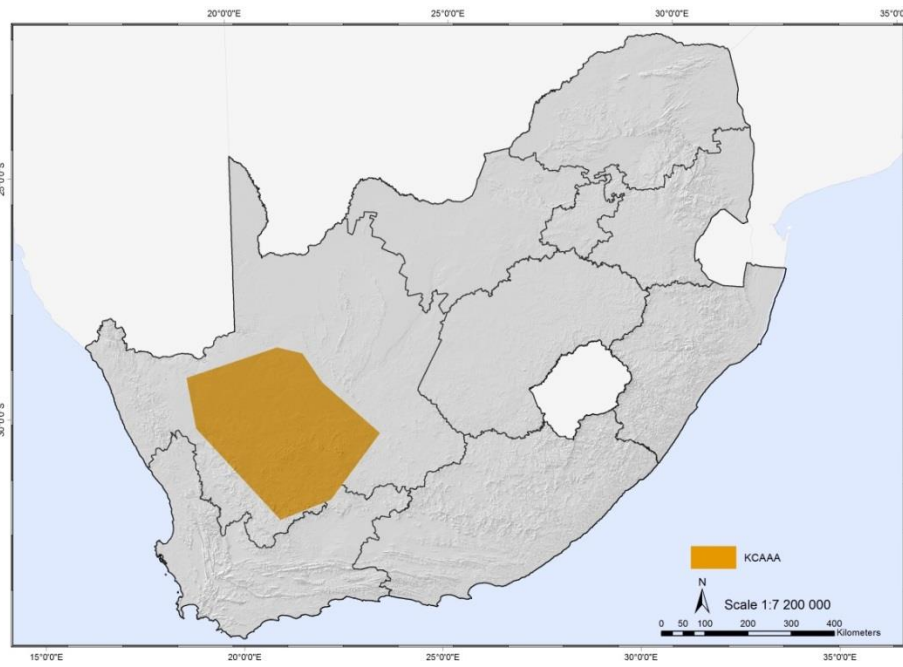
Weather Radars – Wind only

Features	Source	Attributes	Mapping Sensitivity	Sensitivity (Wind)
Weather Radars	REDZs 1 SEA dataset	Weather Radars	Very high sensitivity	0-18 km
			High sensitivity	18-30 km
			Medium sensitivity	30-60
			Low sensitivity	more than 60 km

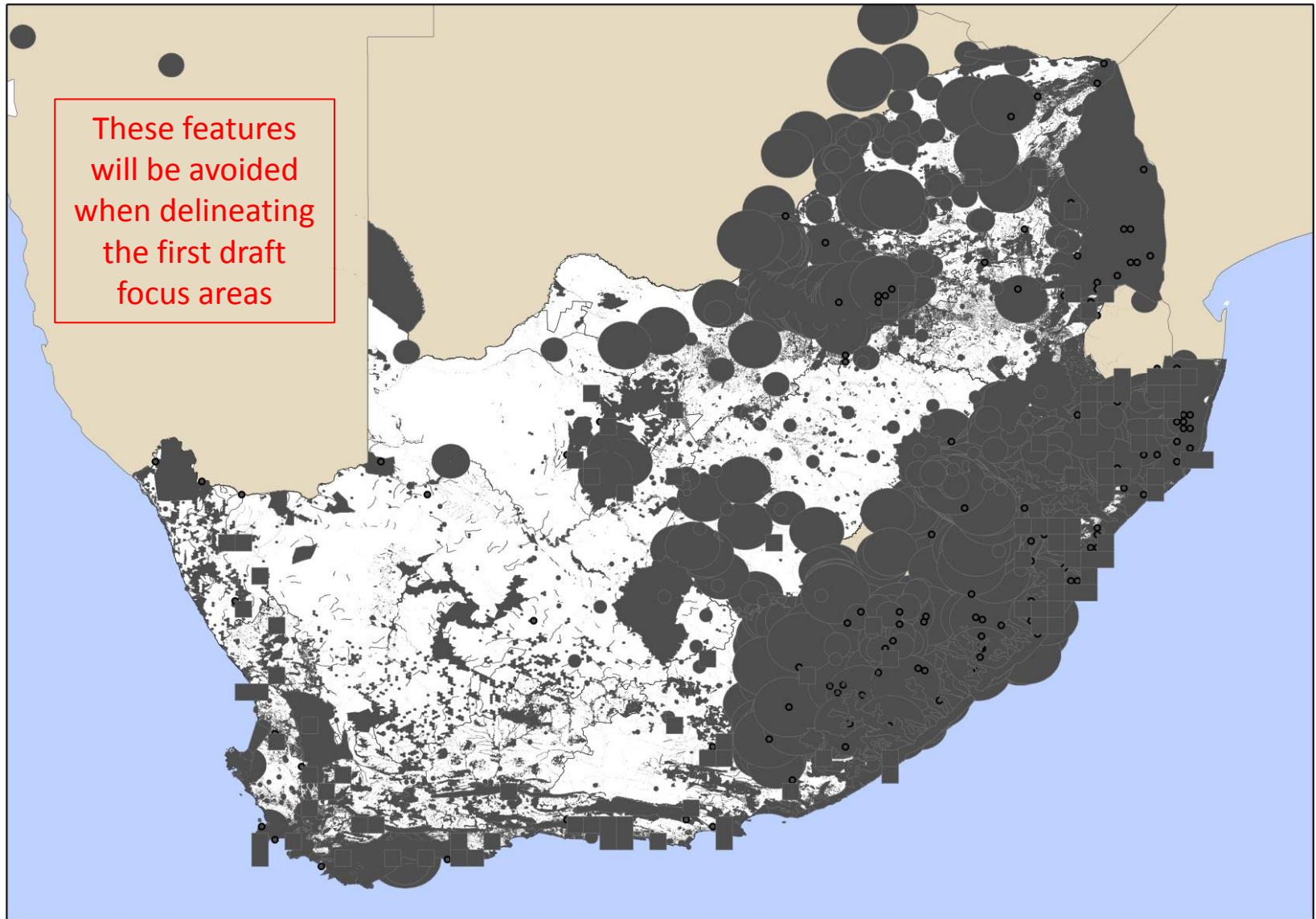


SKA and KCAAA – Wind and Solar

Features	Source	Attributes	Mapping Sensitivity	Sensitivity (Wind)	Mapping Sensitivity	Sensitivity (Solar)
Karoo Central Astronomy Advantage Area (KCAAA)	CSIR	Karoo Central Astronomy Advantage Area	Medium sensitivity	feature	Medium sensitivity	feature
Square Kilometre Array (SKA) SEA study area	SKA SEA	Square Kilometre Array (SKA) study area	Very high sensitivity	feature	Very high sensitivity	feature
			High sensitivity	0-20 km	High sensitivity	0-20 km



Features of Critical Importance



Thank you for your participation to this second ERG/PSC meeting on 25th July 2017

Please send your inputs to the SEA project manager:

Abulele Adams

Tel: (021) 888 2408

Fax: (021) 888 2473

Email: aadams1@csir.co.za

Project website: <http://redzs.csir.co.za>

Project email: redzs@csir.co.za



environmental affairs
Department:
Environmental Affairs
REPUBLIC OF SOUTH AFRICA

CSIR
our future through science

SANBI
Biodiversity for Life
South African National Biodiversity Institute

